

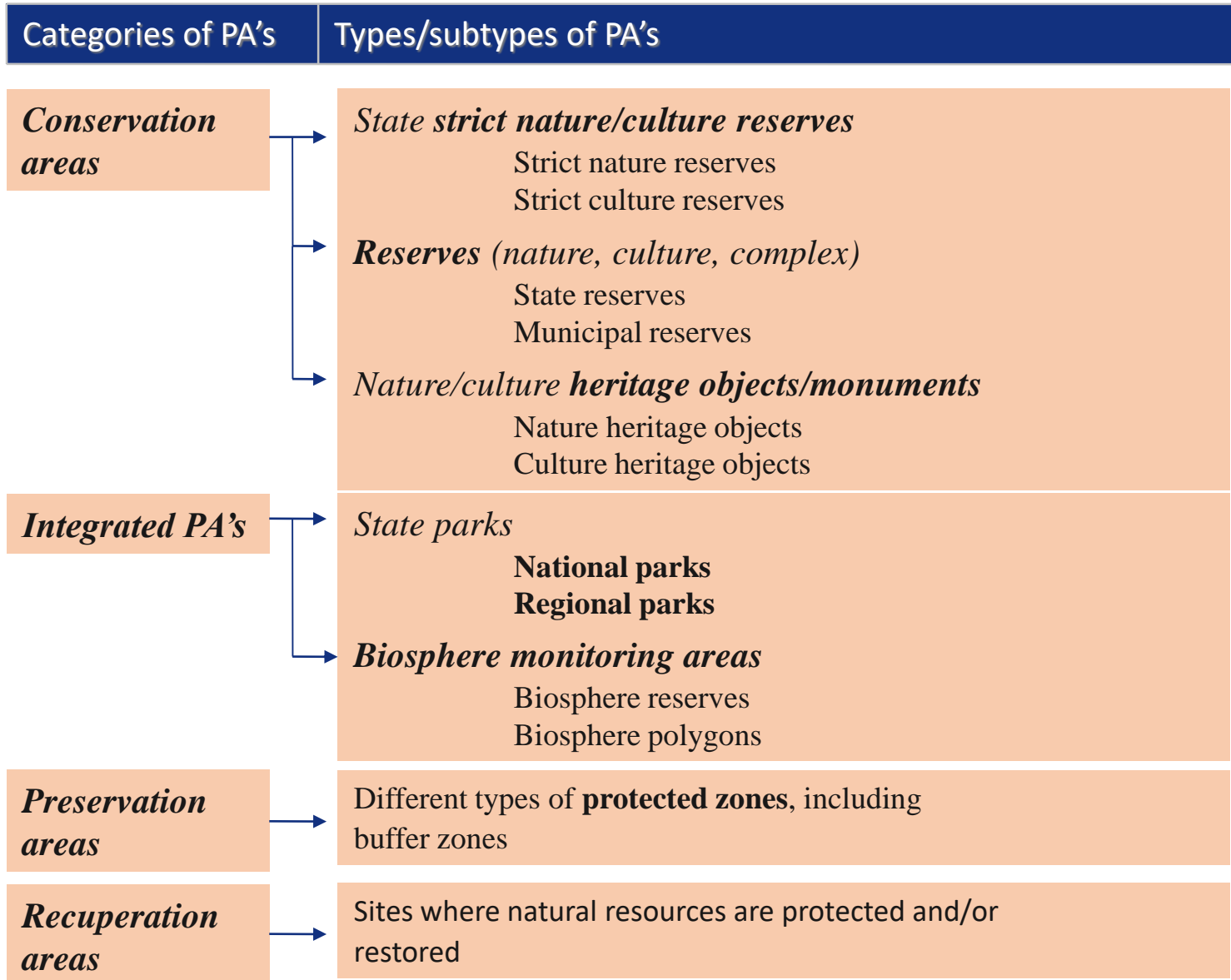
# PROTECTED AREAS IN LITHUANIA



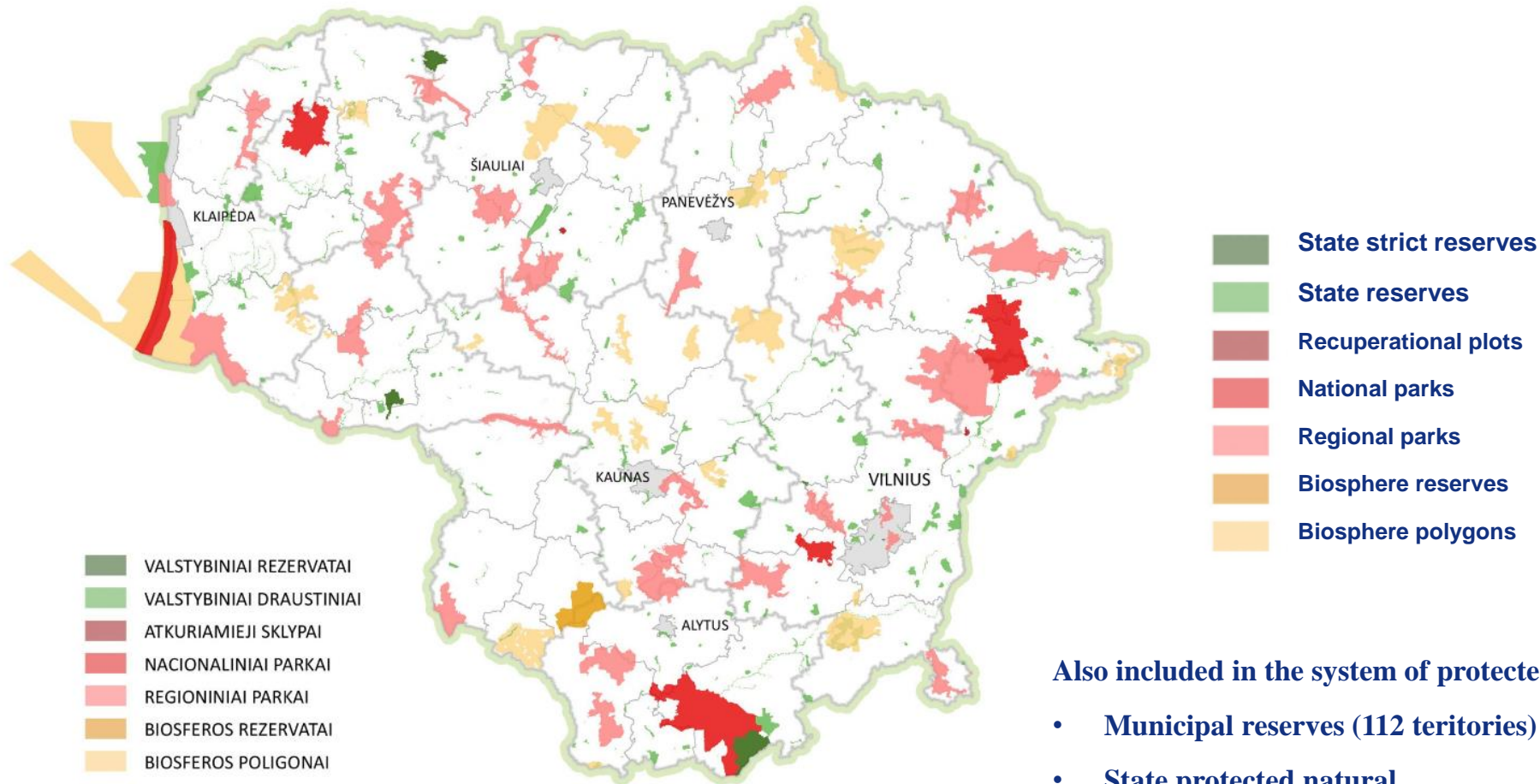
- Nerijus Žitkevičius
- Methodical Analytical Centre of State Service for Protected Areas
- [nerijus.zitkevicius@vstt.lt](mailto:nerijus.zitkevicius@vstt.lt)



# System of Protected Areas in Lithuania



# Protected areas in Lithuania



## Also included in the system of protected areas:

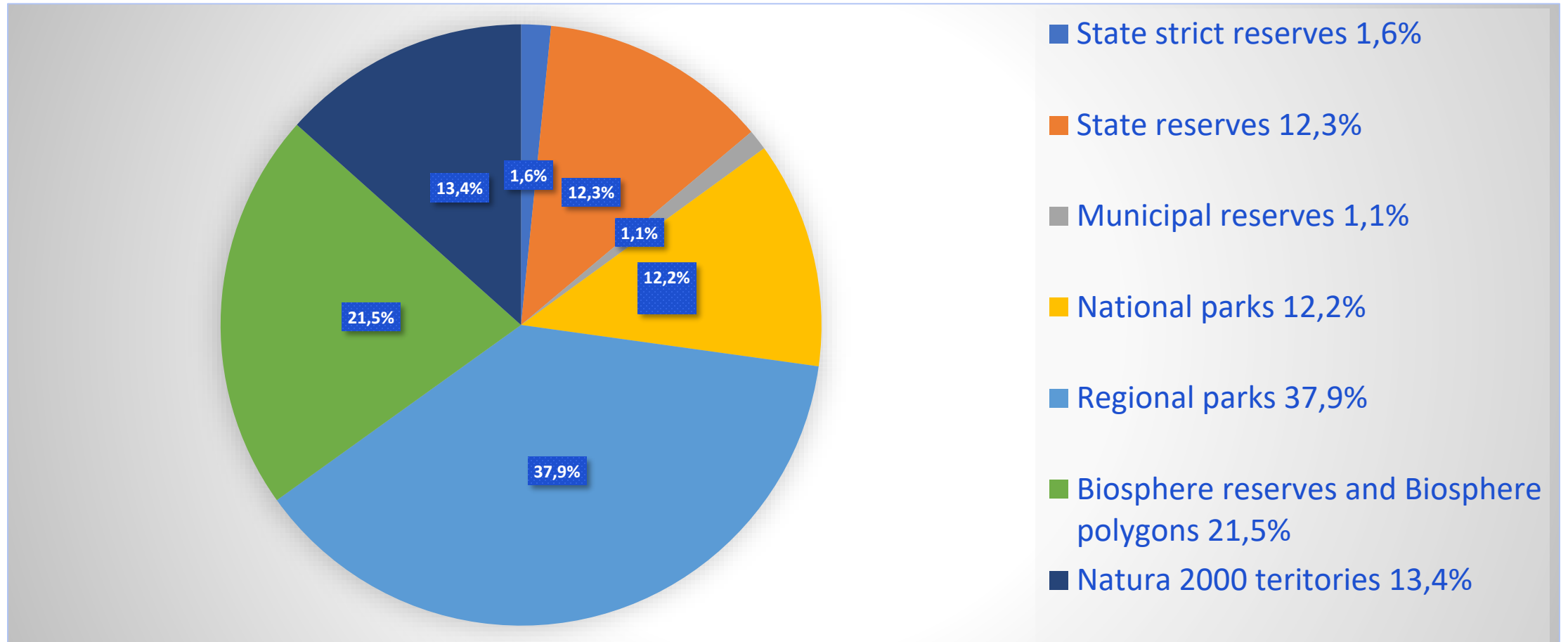
- Municipal reserves (112 territories)
- State protected natural heritage sites (932 objects)

## INTERNATIONALLY IMPORTANT PROTECTED AREAS:

- The World Heritage List (UNESCO) – 5 territories.
- The wetlands of international importance (RAMSAR) – 5 territories.

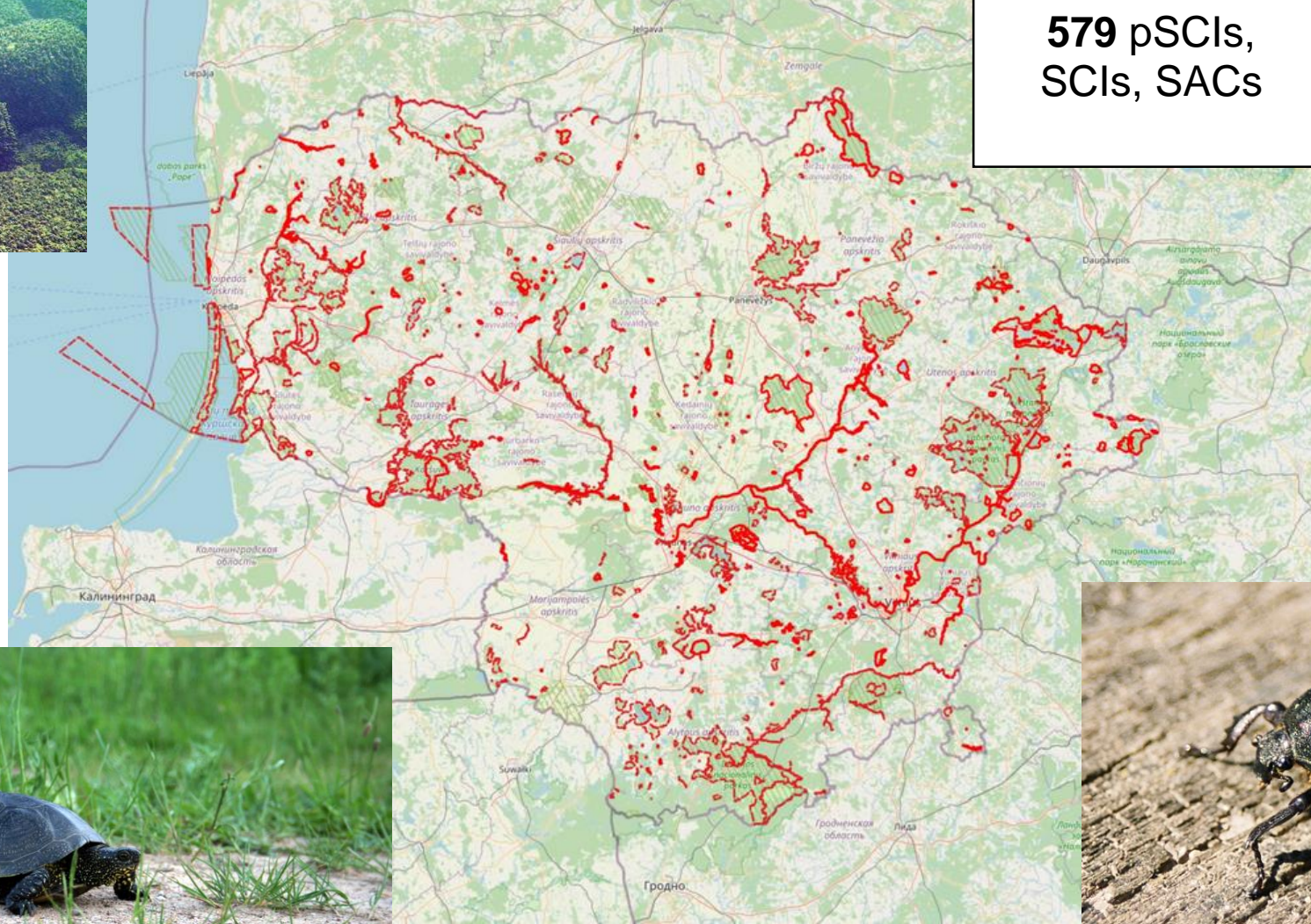
## Proportion of protected areas by types

**18,13 % of total area of country (1183681.74 ha)**



# NATURA 2000 network in Lithuania

Areas for natural habitats and species conservation (The Habitats Directive)



**579** pSCIs,  
SCIs, SACs

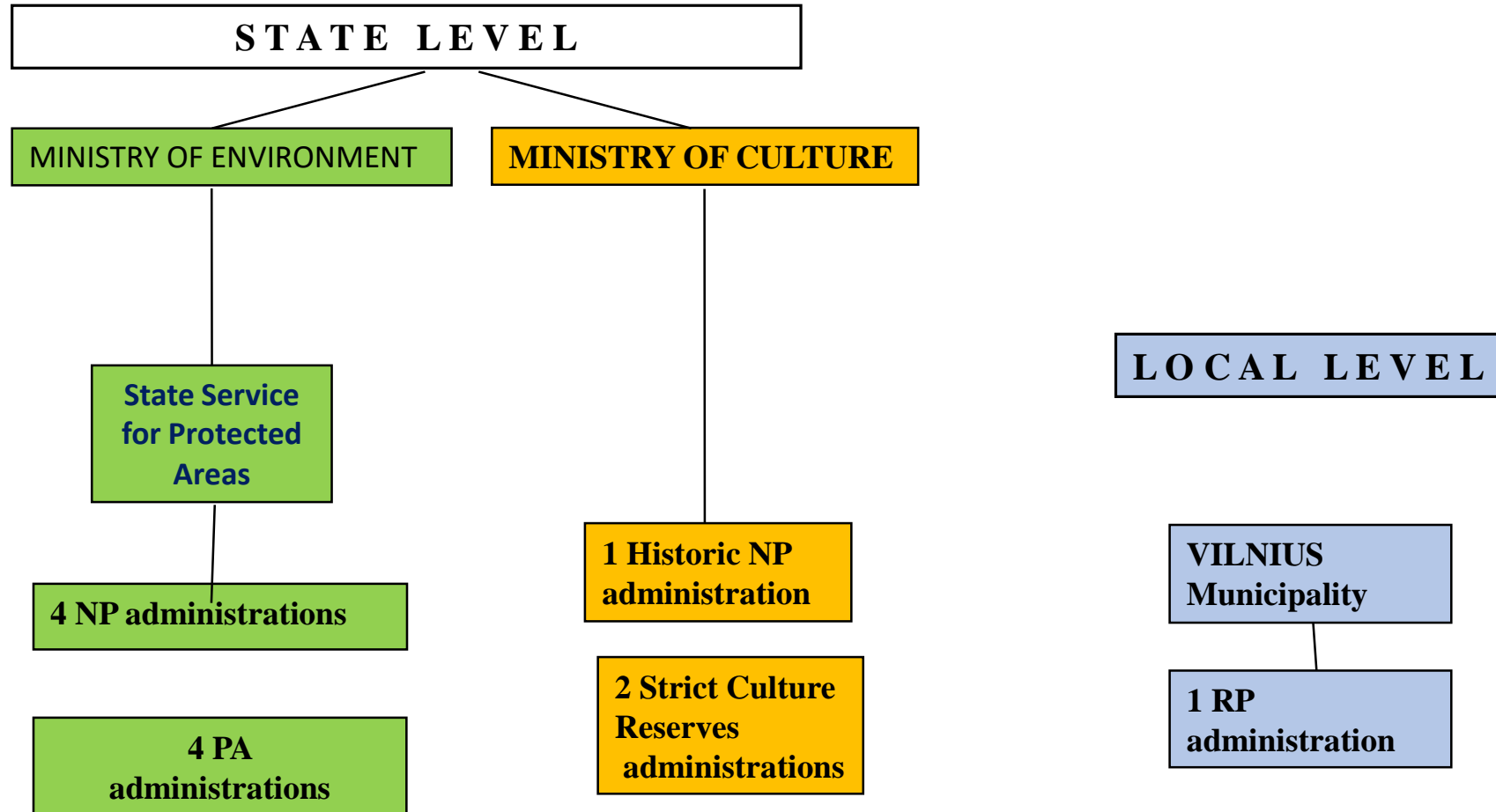


# NATURA 2000 network in Lithuania

Protected areas for birds conservation (The Birds Directive)



# Protected areas governance scheme



# Protected habitats types in Lithuania

**8 types** of peatlands habitats are protected in Lithuania.

These habitats cover an area of 27358 ha ( (BIGIS project).

In protected areas (Natura 2000 and others) these habitats cover an area of **21512** ha.

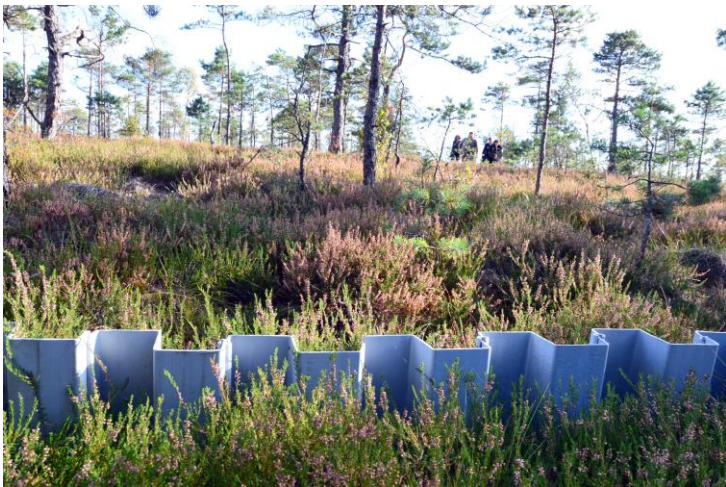
- 7110\* Active raised bogs
- 7120 Degraded raised bogs still capable of natural regeneration
- 7140 Transition mires and quaking bogs
- 7150 Depressions on peat substrates of the Rhynchosporion
- 7160 Fennoscandian mineral-rich springs and sprinfens
- 7210 \*Calcareous fens with *Caldium mariscus* and species of the *Caricion davallianae*
- 7220 \* Petrifying springs with tufa formation (*Cratoneurion*)
- 7230 Alkaline fens





## Protection of peatlands

- Most of the habitats are in a bad condition, because trees and scrubs are growing, or the hydrological regime is changing.
- Protected areas administrations organize management (about 300 ha every year).
- We use measures, for example: restoring the hydrological regime, cutting shrubs. We are planning these measures in nature management plans.
- The works are carried out with EU structural funds, LIFE projects and other funds.
- The hydrological regime has already been restored or restoration works are underway in 32 Natura 2000 areas. It is about 12635 ha.



**Thank you for your attention!**

