

Outlook: Future update of the peatland map of Europe

Moritz Kaiser

Michael Succow Foundation, Partner in the Greifswald Mire Centre

Peatlands in Europe and the way forward:
Insights from the Global Peatland Assessment
14th Nov. 2023 online

Supported by:



on the basis of a decision
by the German Bundestag



Frame

3 projects at GMC aiming at update:

- Building the European Peatlands Initiative
- Wet Horizons
- ALFAwetlands



Photo: Jan Peters

Data

Vegetation

- Ecosystem basemap
- Natura 2000 habitats, salt marshes, wet alder forests, ...
- Potential natural vegetation

Soil

- Histosols
- Soil carbon stock
- Soil drainage status

Data

Wetlands Peatlands

- Fen
- Bog
- Peat thickness
- Peat extraction sites



Estonia

Data source: EstSoil-EH (ODbL); ETAK: Maa-amet 2022

Data

Watercourses

Drainage

- Ditches
- Polders

Historic landscape

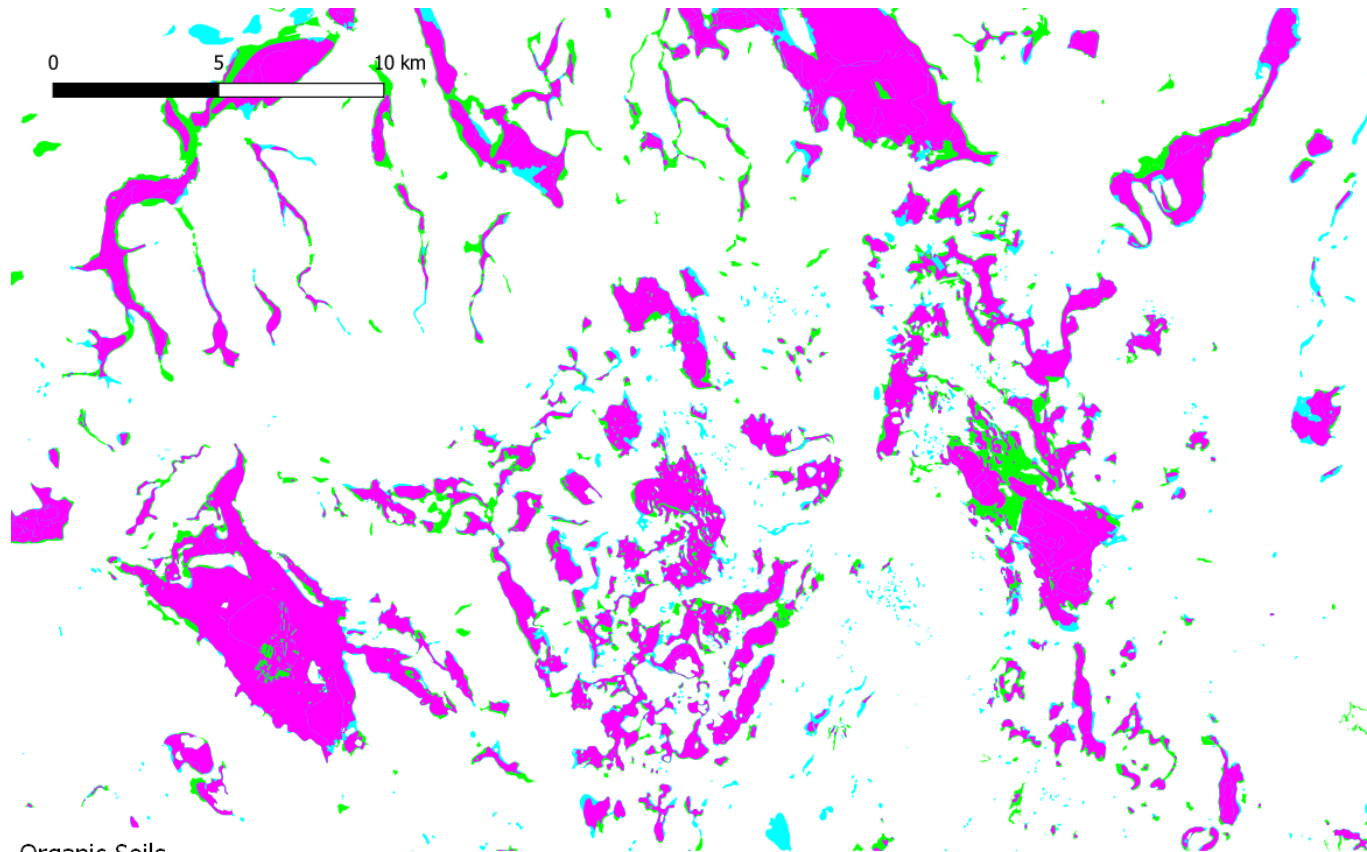
Elevation



Estonia

Data source: EstSoil-EH (ODbL); ETAK: Maa-amet 2022

Data




Organic Soils

- both Thuenen and GMC
- GMC 2021
- Thuenen 2023

Data source:

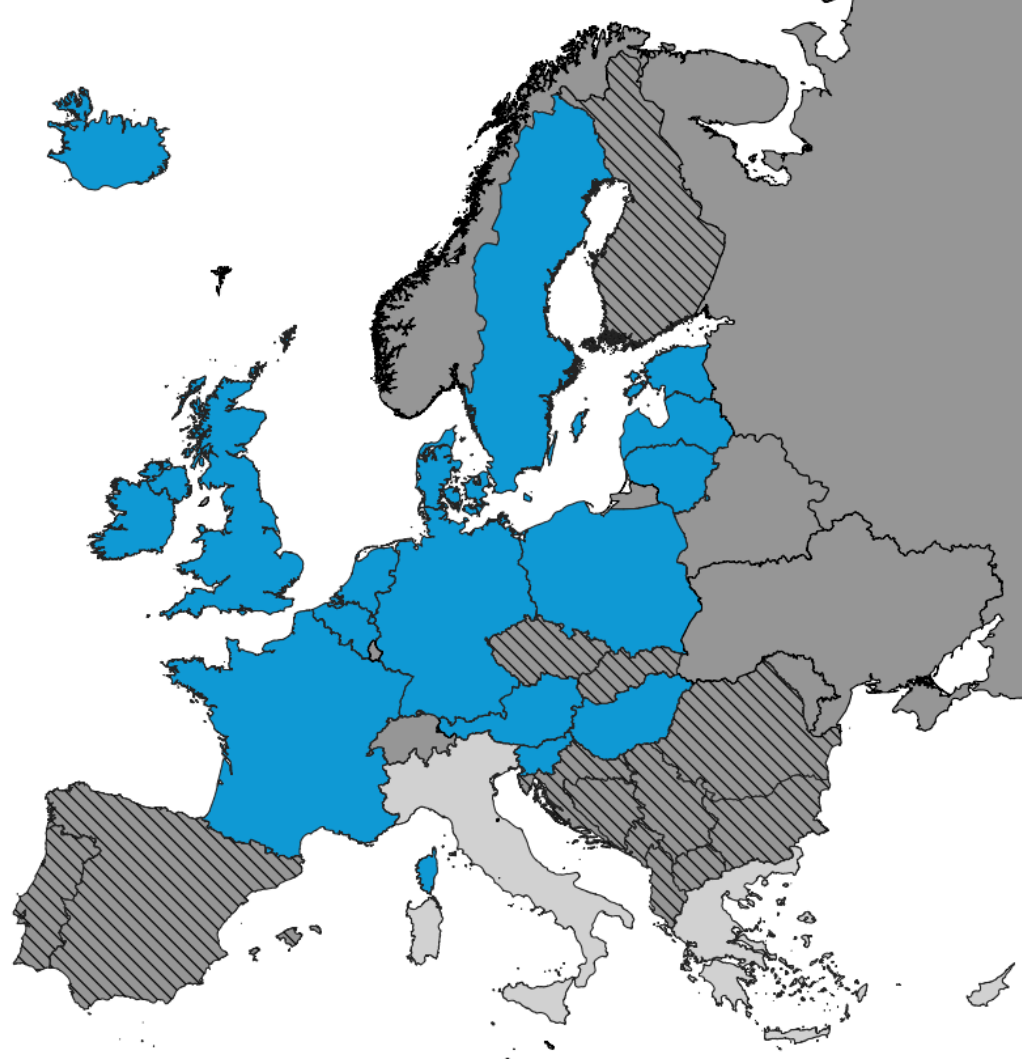
Tegetmeyer, C., Barthelmes, K.-D., Busse, S. & Barthelmes, A. (2021) Aggregierte Karte der organischen Böden Deutschlands. Greifswald Moor Centrum-Schriftenreihe 01/2021
Wittnebel M, Frank S, Tiemeyer B (2023) Aktualisierte Kulisse organischer Böden in Deutschland. Thuenen Working Paper 212

Peatland Data Update

-  new peatland data
-  focus countries for update
-  no new peatland data to our knowledge
-  not yet covered

Status: 2023-09




- >400 datasets checked
- Different sources, e.g.
 - National authorities,
 - Research institutes,
 - EEA,
 - ...



Obstacles

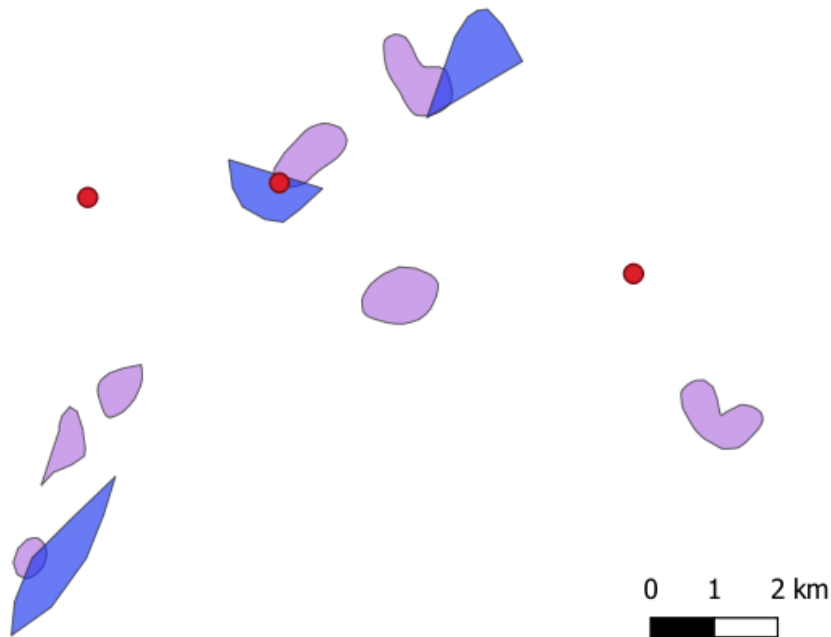
- Collated data differs from country to country (region to region...)
- Data quality differs
- Underlying definitions differ
 - from country to country...
 - „mire“ ecological vs. „peatland“ pedological
- Costs of data
- Harmonization/correction of geometries difficult

Obstacles

-  Histosols
-  Potential Natural Vegetation - peat forming
-  Wetlands (point)

Greifswald Mire Centre 09/2023

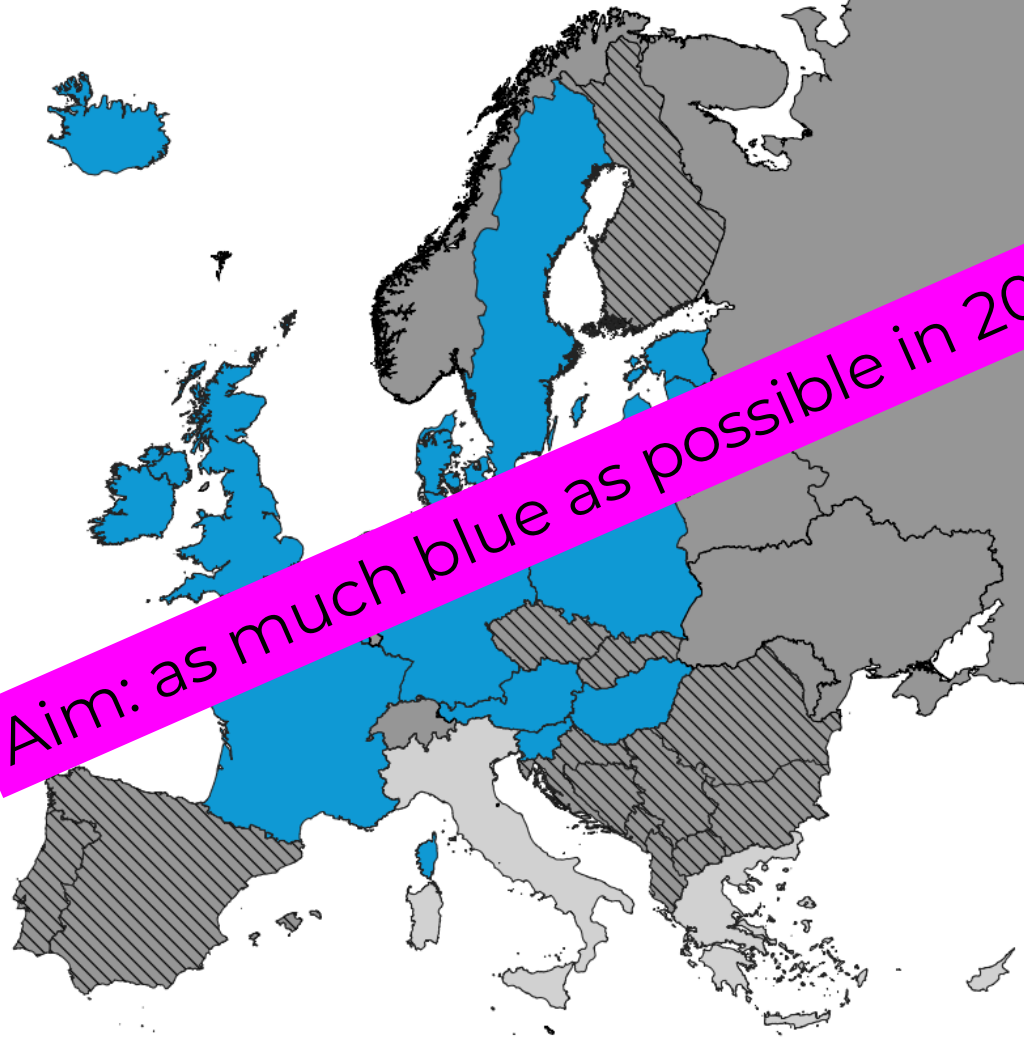
Data: Atlas krajiny Slovenskej republiky 2002



- Peatland Data Update
- new peatland data
 - focus countries for update
 - no new peatland data to our knowledge
 - not yet covered

Aim: as much blue as possible in 2024 😊

Hints on data welcome!



Thank you!

MORITZ.KAISER@SUCCOW-STIFTUNG.DE

[HTTPS://WWW.SUCCOW-STIFTUNG.DE/EN/](https://www.succow-stiftung.de/en/)

[HTTPS://WWW.GREIFSWALDMOOR.DE/](https://www.greifswaldmoor.de/)



Photo: Andreas Haberl

Building the European Peatlands Initiative: a strong alliance for peatland climate protection in Europe

This project is part of the [European Climate Initiative \(EUKI\)](#) of the German Federal Ministry for Economic Affairs and Climate Action (BMWK).